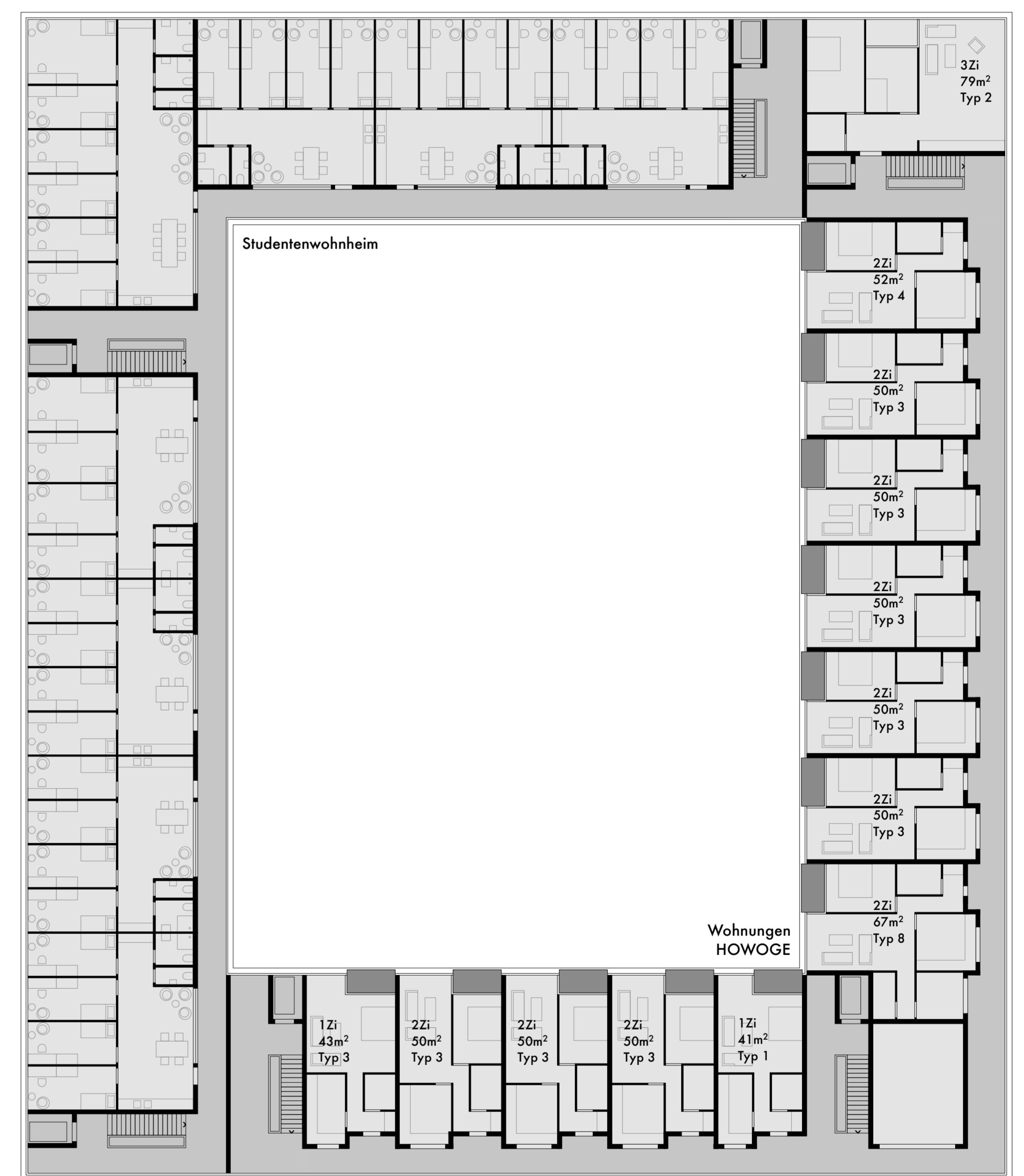
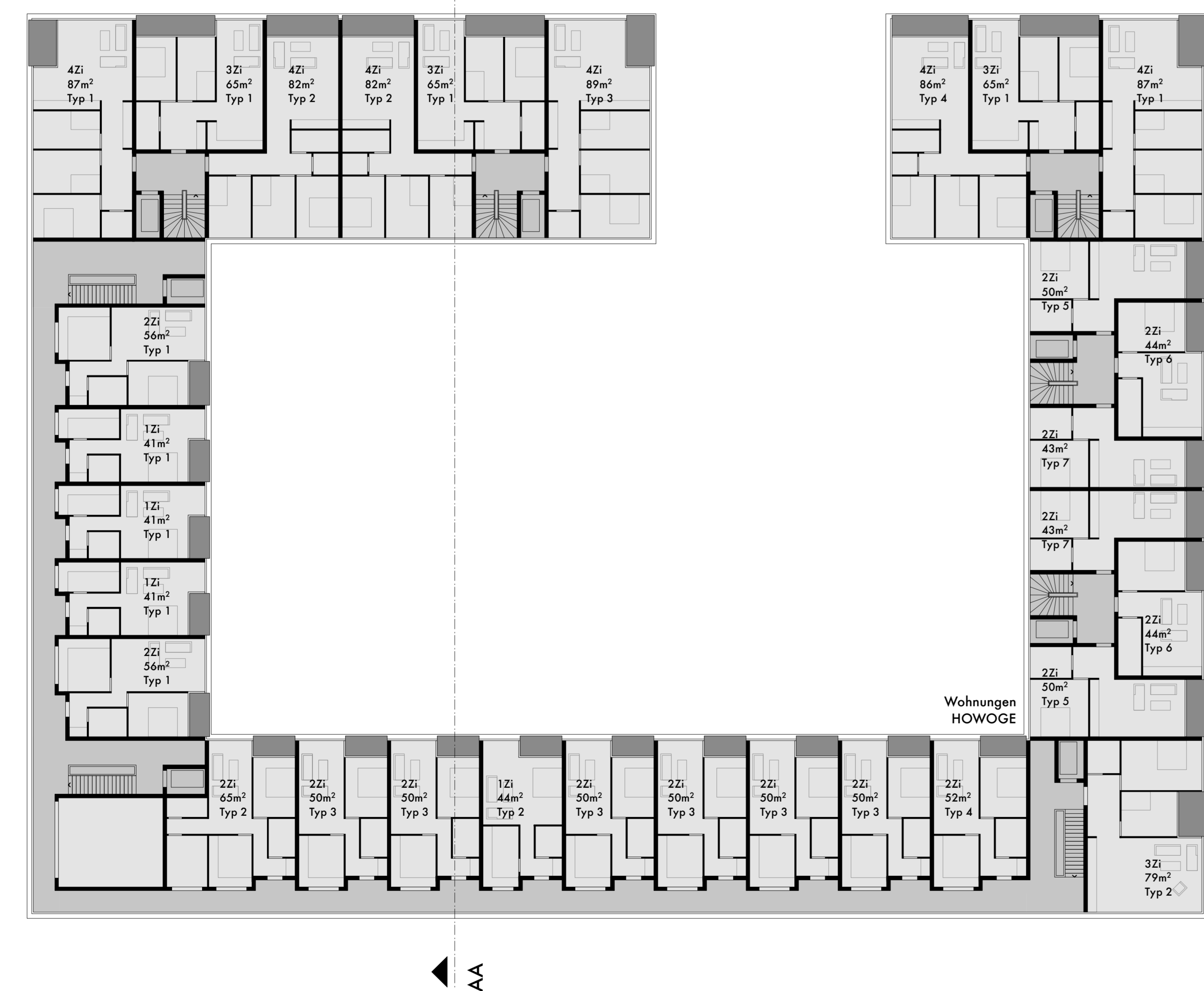


2

[illegible]

Das Diagramm zeigt vier verschiedene Konfigurationen von Vernetzungen in einem 10x10-Matrix-Modell. Die Vernetzungen sind durch verschiedene Farben und Symbole (Pfeile, Kreise) dargestellt. Die Beschriftungen sind:

- Eigenvernetzungen VARENZA
- Nebenvernetzungen VARENZA
- Gegenvernetzungen VARENZA
- Selbstvernetzungen VARENZA
- Vernetzungen HOWOGE
- Vernetzungen HOWOGE
- Vernetzungen HOWOGE
- Vernetzungen HOWOGE

The image displays several architectural floor plans of the Varena site, illustrating the layout of various structures and their components. The plans are color-coded and numbered to identify different parts of the site.

- Eigenumschungen VARENA:** A large, irregular structure with a central courtyard. The plan is divided into several sections, with numbers 1 through 10 indicating specific areas. A legend on the right identifies the numbers: 1 (Faden), 2 (Gewölbe), 3 (Küchenschornstein), 4 (Ständerrest), and 5 (Holzrinde).
- Mittelwachen VARENA:** A smaller, rectangular structure with a central courtyard. The plan is divided into several sections, with numbers 1 through 10 indicating specific areas.
- Hilfswachen VARENA:** A small, rectangular structure with a central courtyard. The plan is divided into several sections, with numbers 1 through 10 indicating specific areas.
- Wohnhaus ROWOWE:** A large, rectangular structure with a central courtyard. The plan is divided into several sections, with numbers 1 through 10 indicating specific areas.
- Ständerwühlstein:** A small, rectangular structure with a central courtyard. The plan is divided into several sections, with numbers 1 through 10 indicating specific areas.

The legend on the right side of the image identifies the numbers used in the plans:

- 1 Faden
- 2 Gewölbe
- 3 Küchenschornstein
- 4 Ständerrest
- 5 Holzrinde

Übersichtsplan 1:1200
Untergeschoss