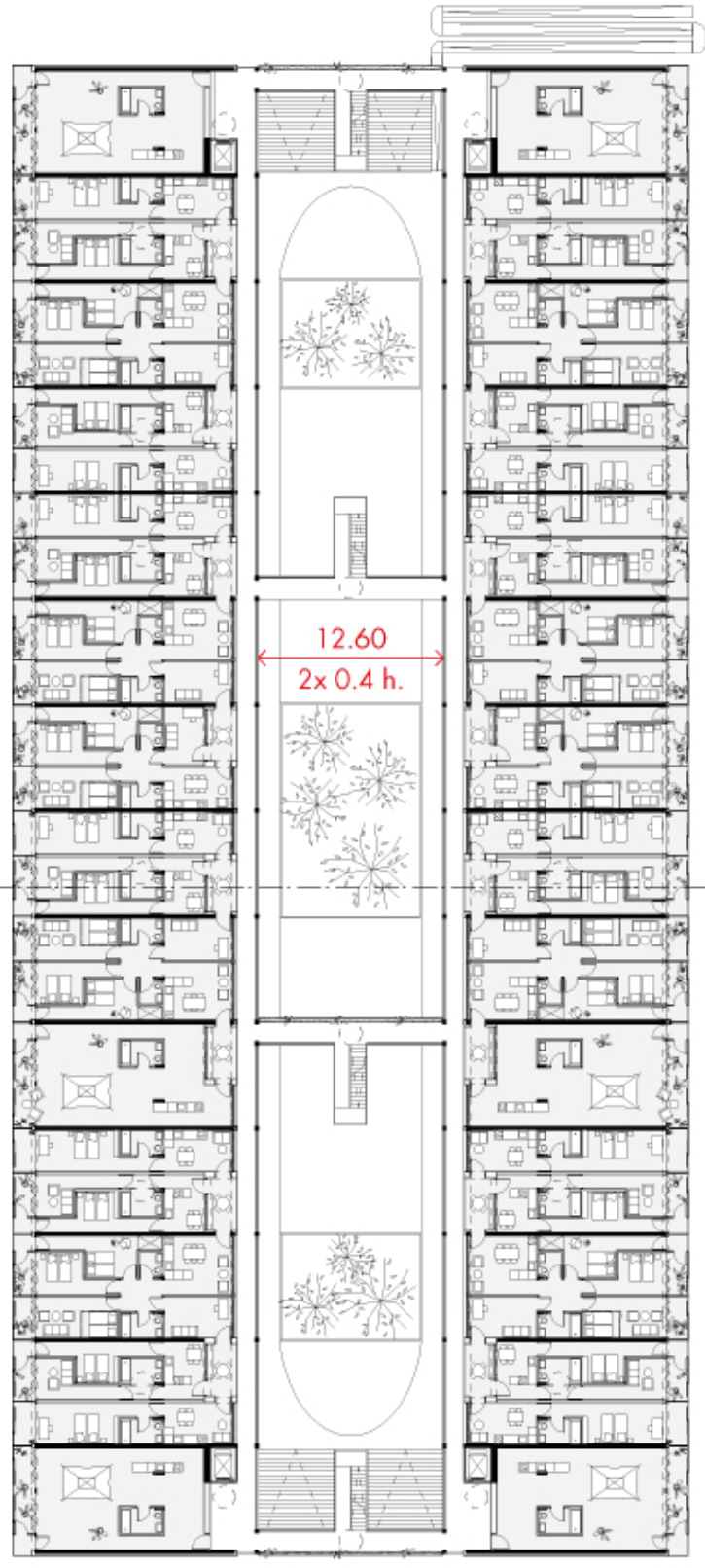


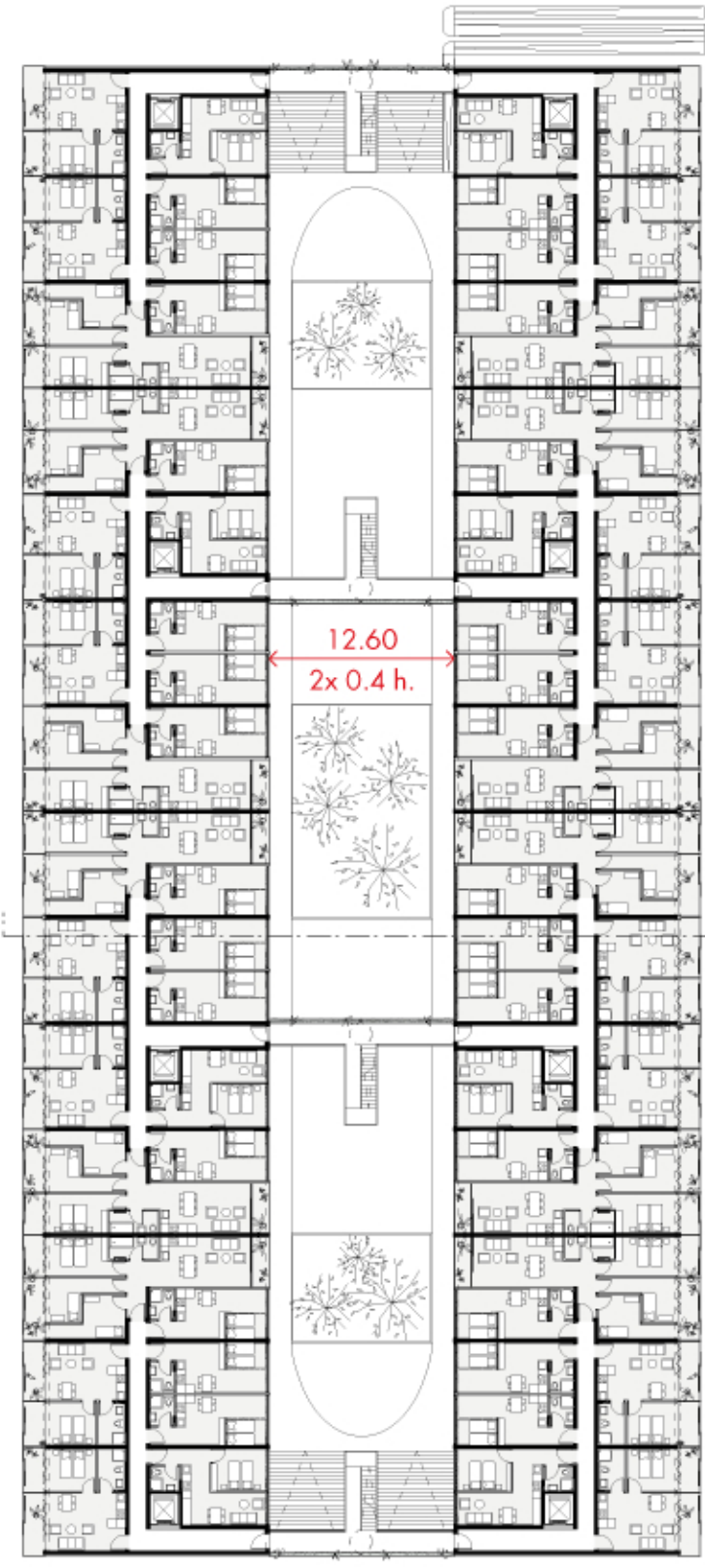
KONKURRIERENDES WERKSTATTVERFAHREN
 ZUR ENTWICKLUNG EINES STÄDTEBAULICHEN MASTERPLANS
 MIT BEDARFSGERECHTEN WOHNHAUSTYPOLOGIEN
 IM BEREICH ZWISCHEN GEHRENSEE, WARTENBERGER,
 HAUPT-, MARZÄHNER UND WOLLENBERGER STRASSE
 IM BEZIRK LICHTENBERG, ORTSTEIL ALT-HOHENSCHÖNHAUSEN

AA



Regelgeschoss M 1:500

BB



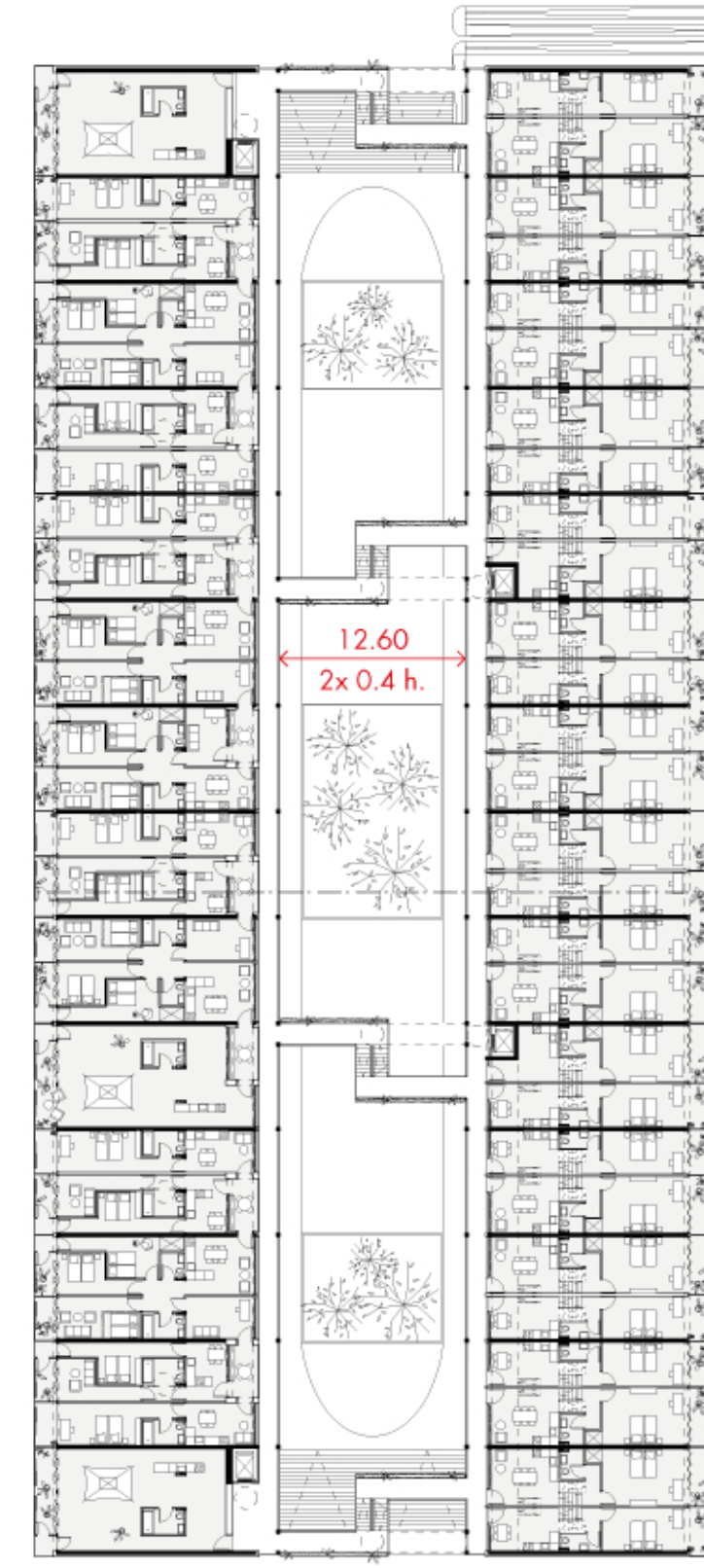
Regelgeschoss M 1:500

AB



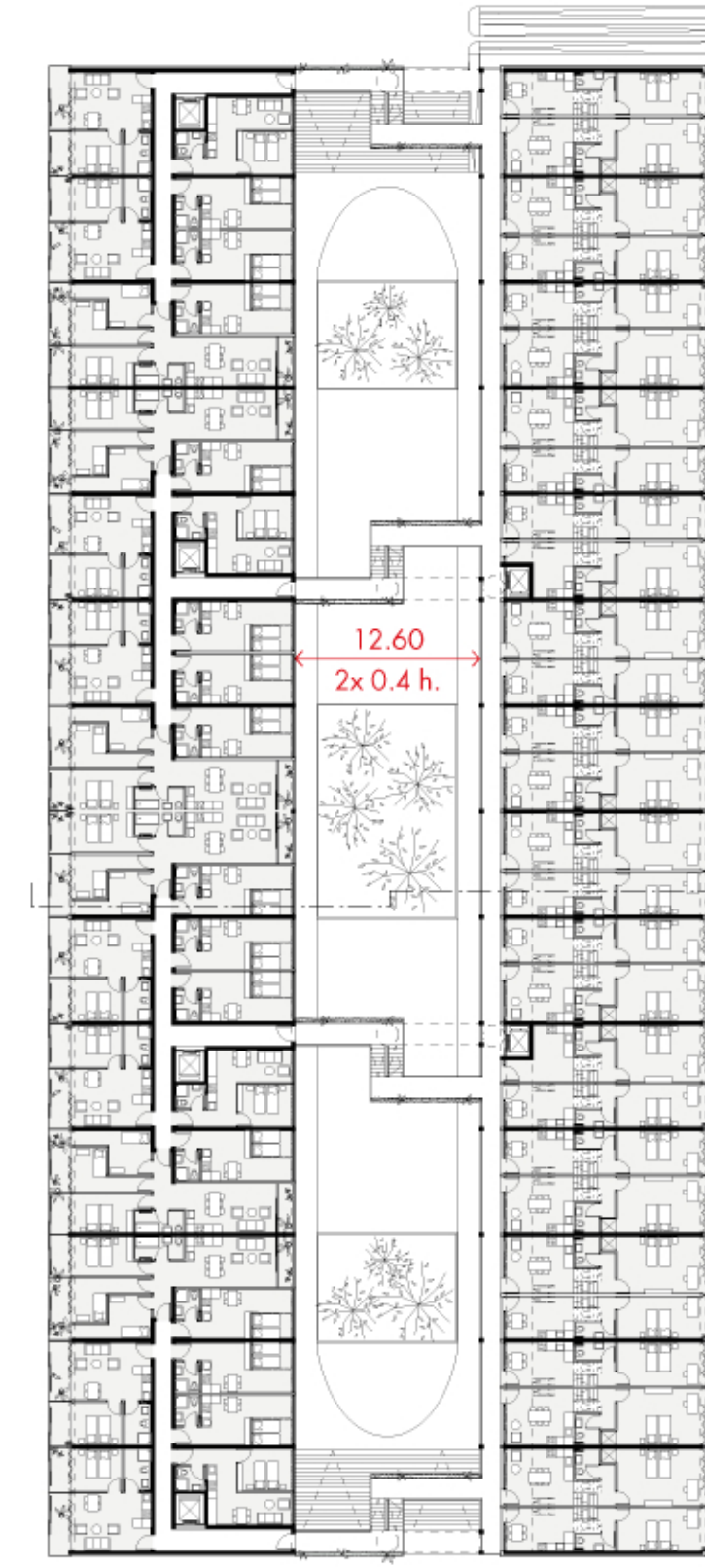
Regelgeschoss M 1:500

AC



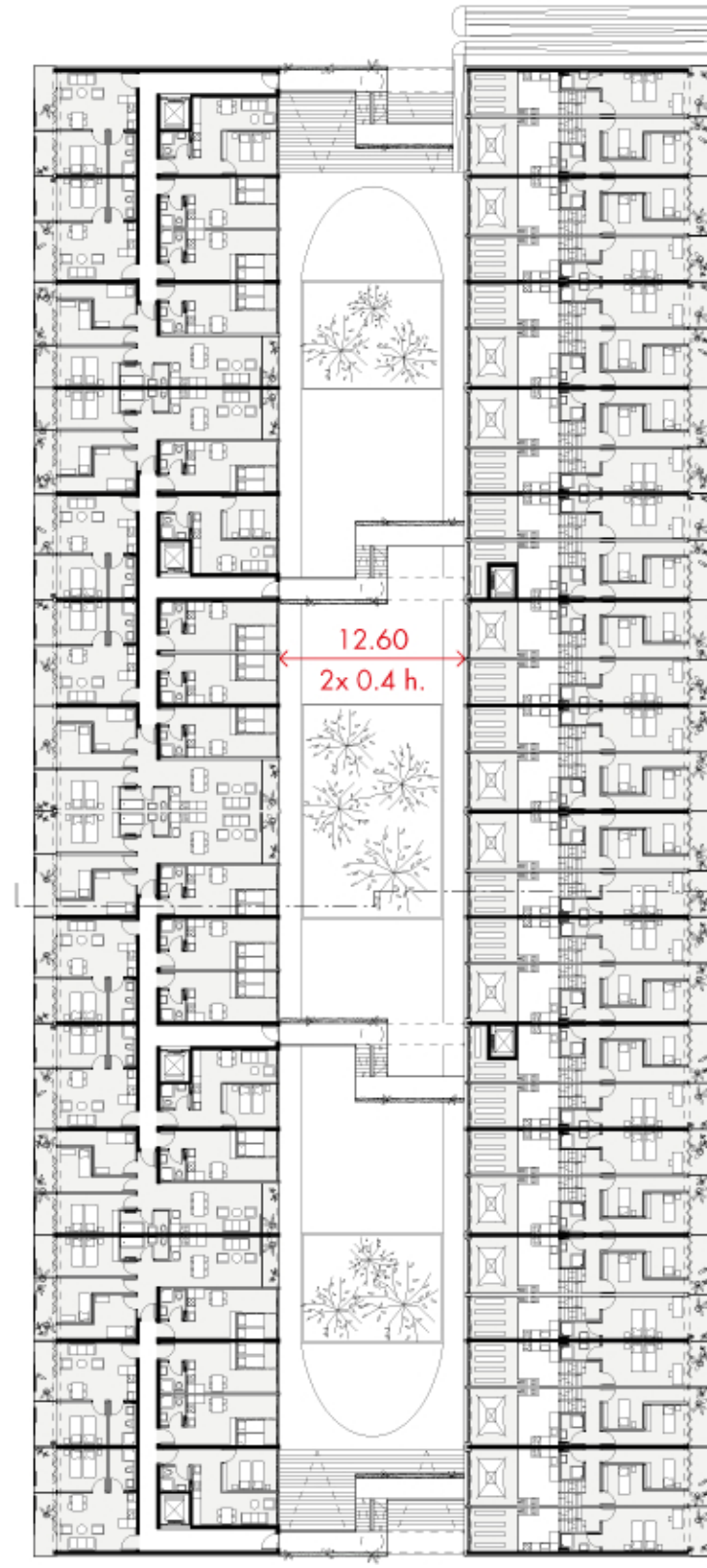
Regelgeschoss M 1:500

BC unten

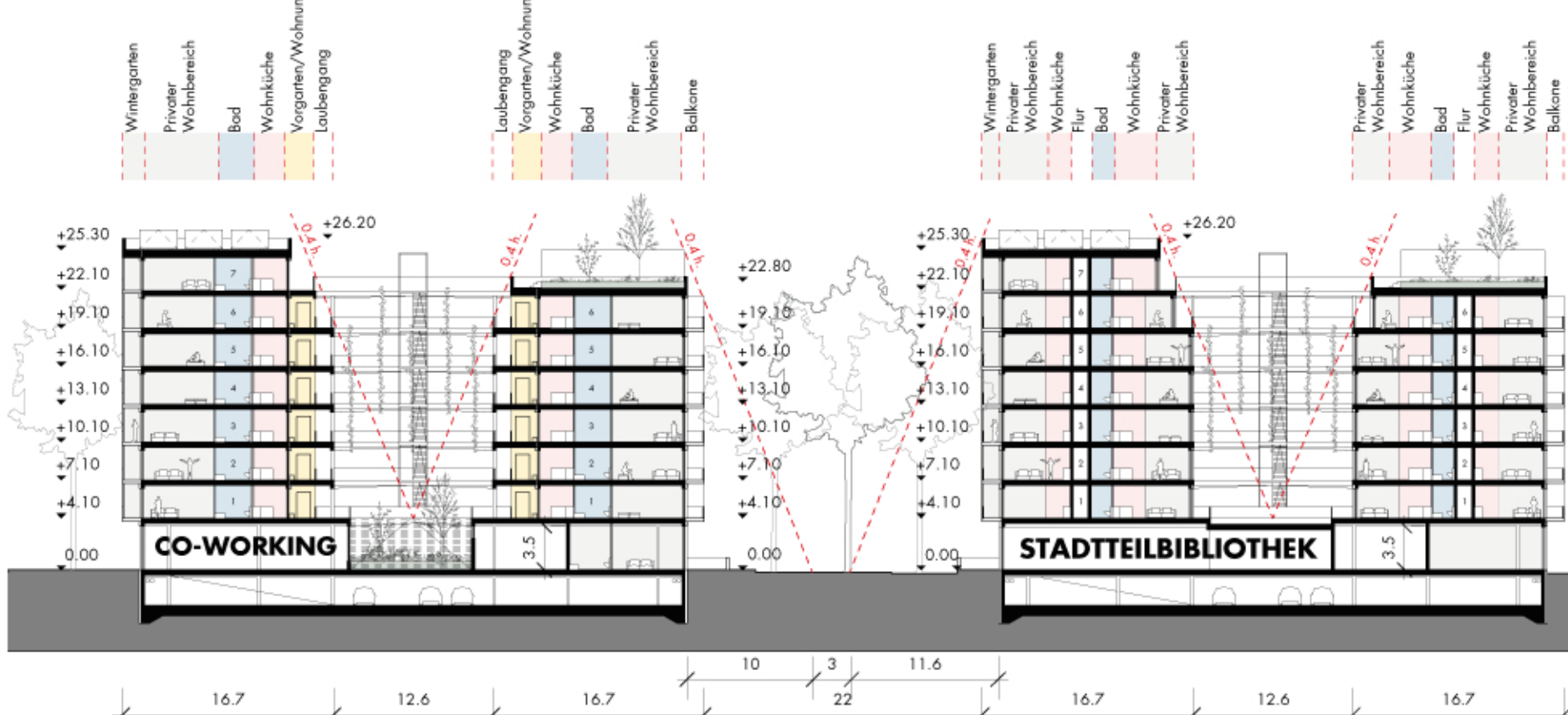


Regelgeschoss M 1:500

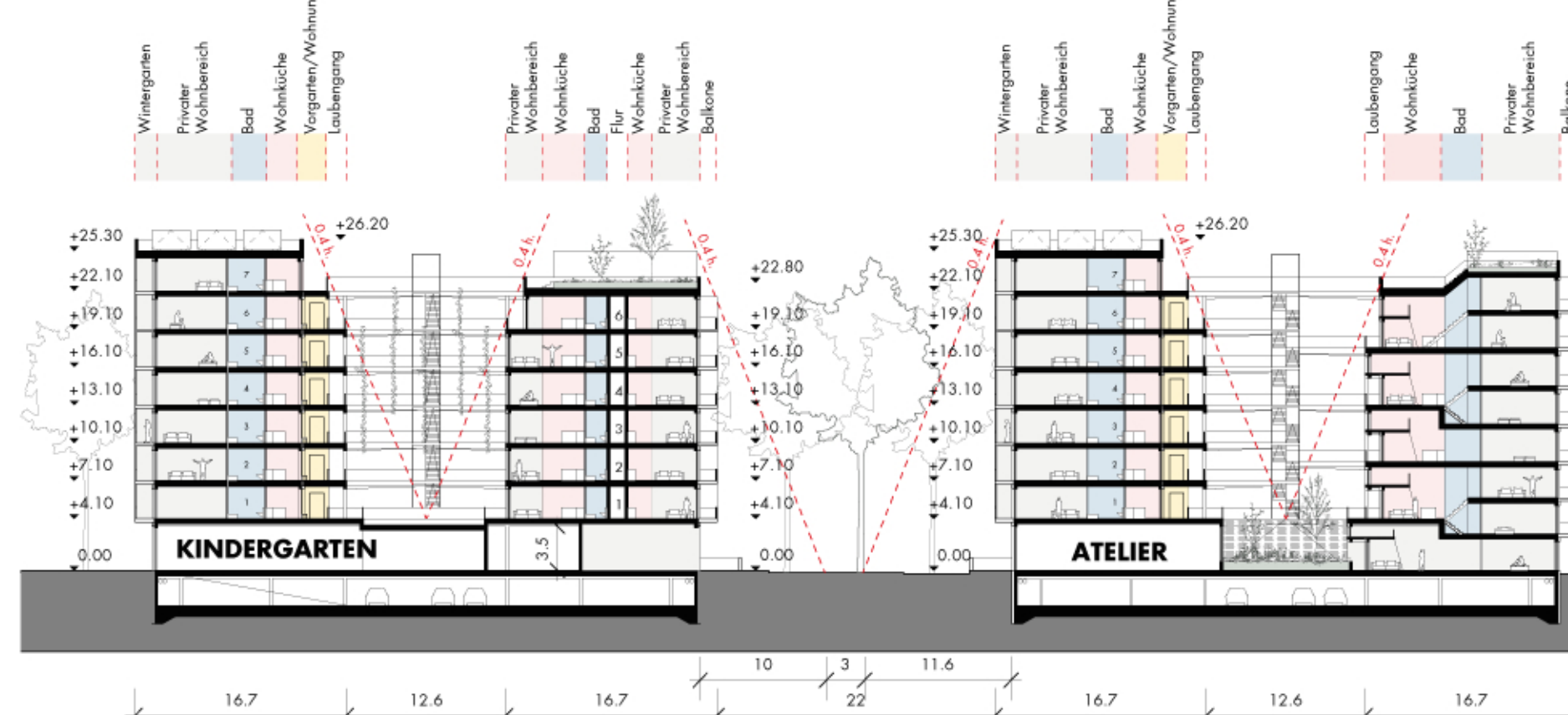
BC oben



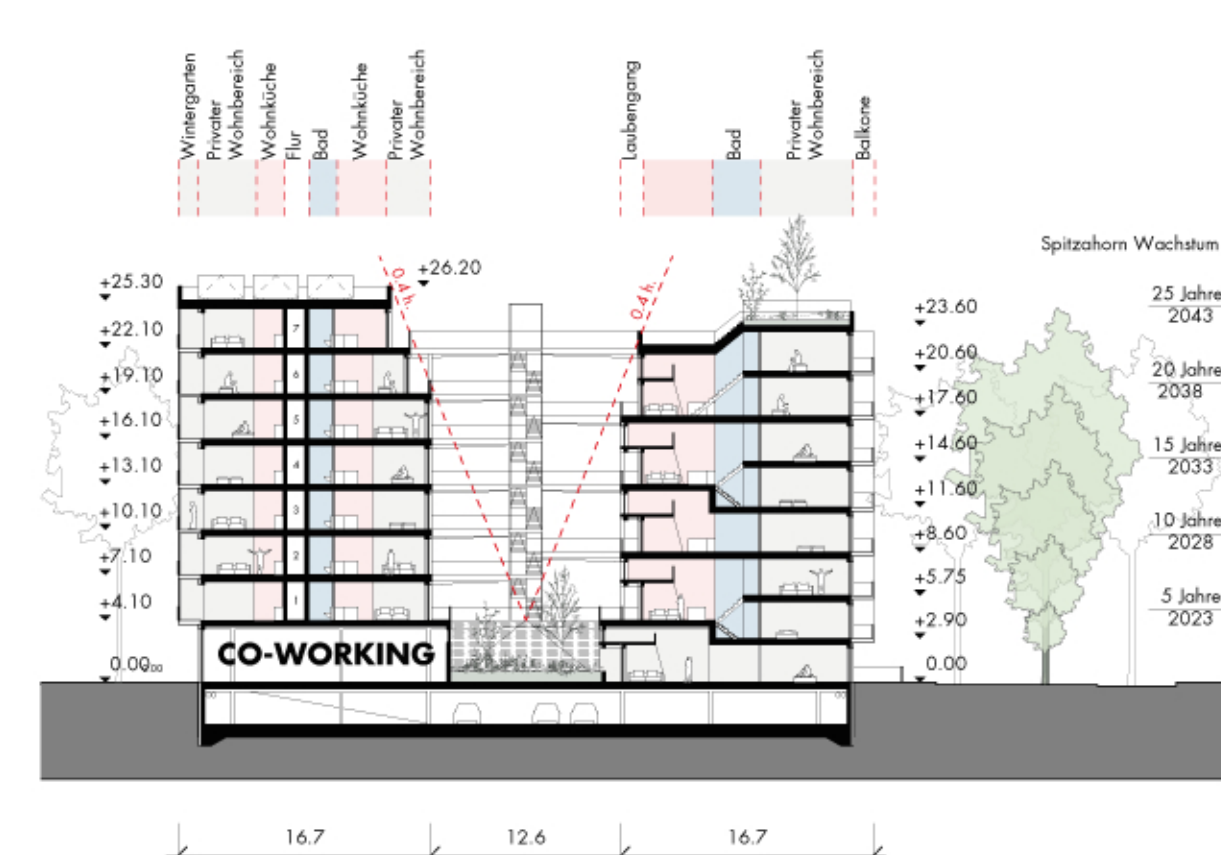
Regelgeschoss M 1:500



Schnitt M 1:500

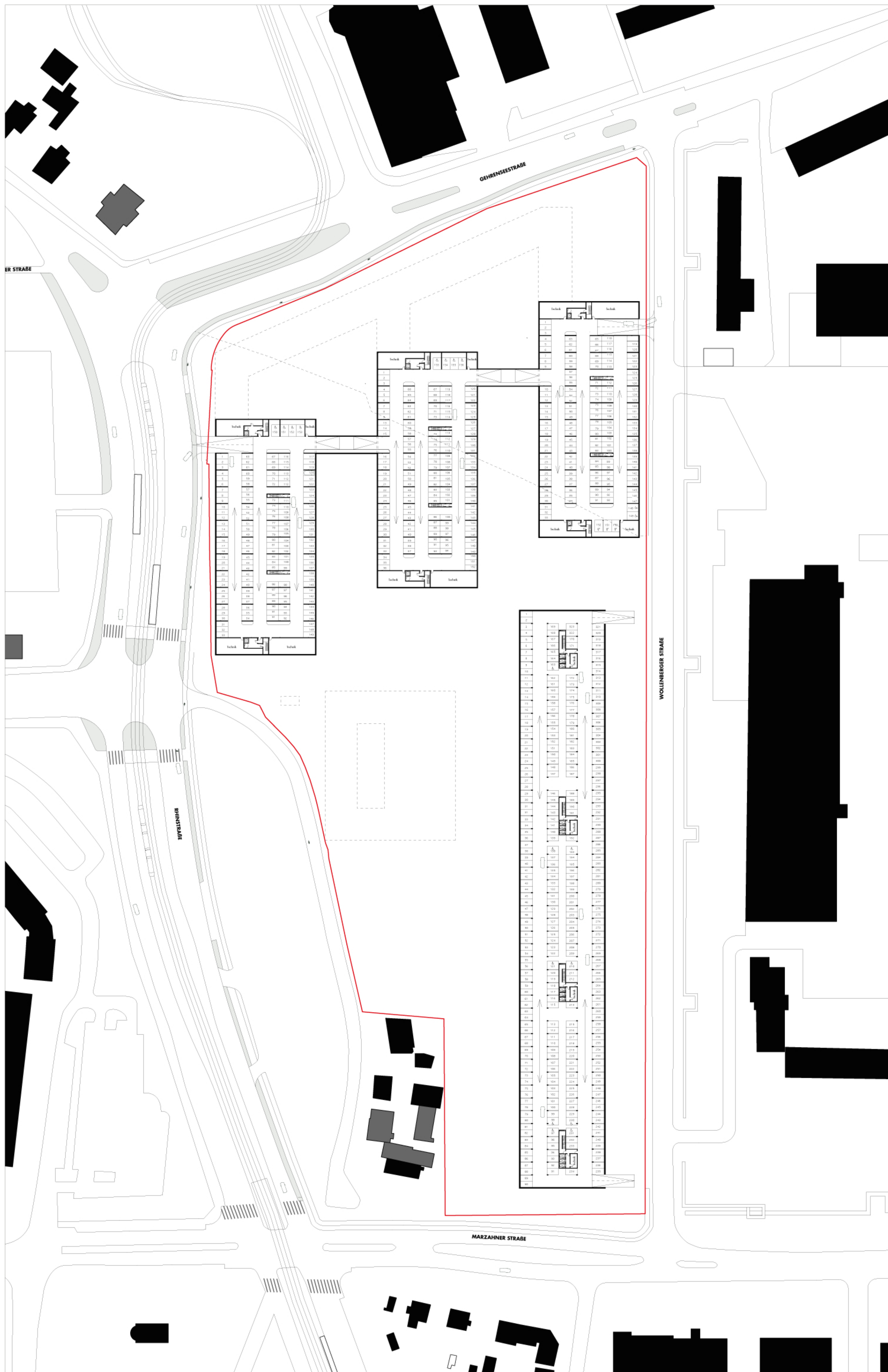


Schnitt M 1:500



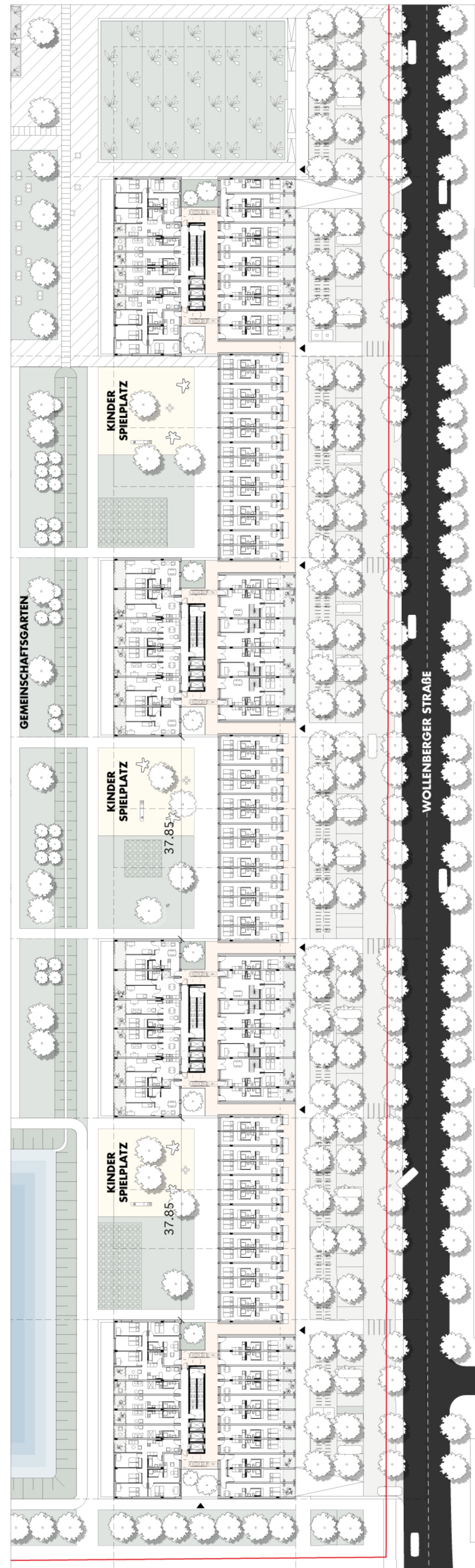
Schnitt M 1:500

Spangengebäude Wohnungstypologien

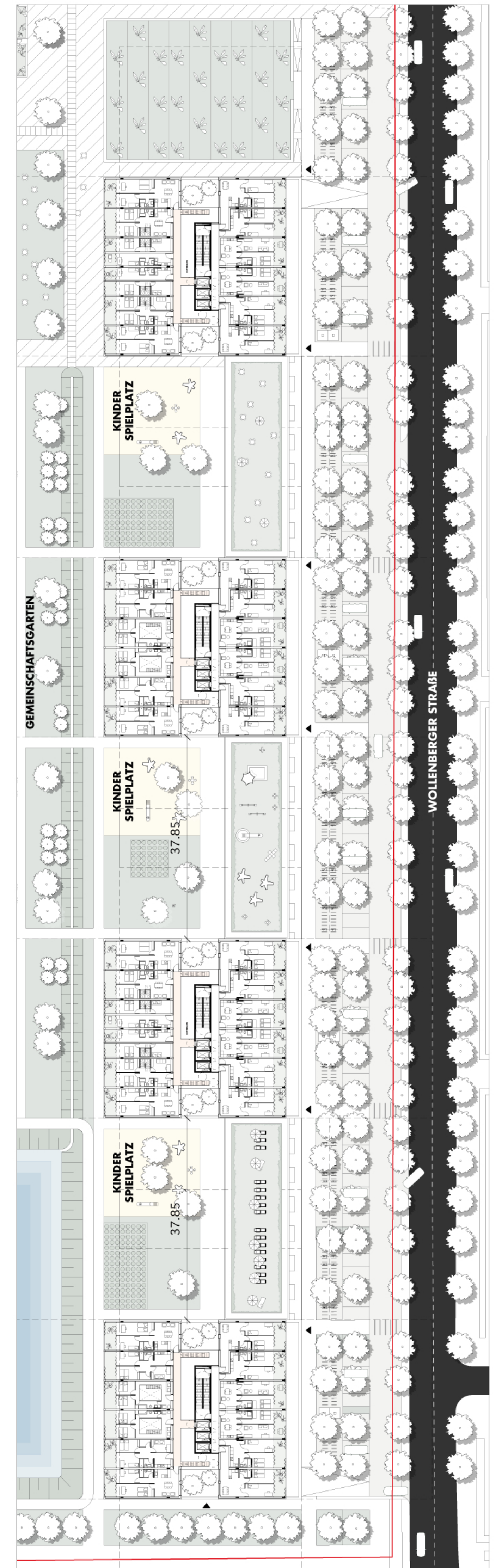


Grundriss Kellergeschoss

M 1:500



Grundriss Regelgeschoss 1-4 M 1:500



Grundriss Regelgeschoss 5-20 M 1:500